

Artwork 'Meet the Flockers' by Mark Taylor

Read more on pages 22-23 www.leigharttrail.com

LEIGH-ON-SEA Town Council News

issue 07



Arts & Culture | Clubs & Societies | Schools
Council Facilities & Outside Spaces

Our community – Our Leigh-on-Sea



Welcome to the seventh issue of Leigh-on-Sea Town Council News. My name is Vivien Rosier and I have taken over the editorship from Councillor Jane Ward who established the newsletter as a quality, informative publication.

This issue will keep you up to date about the work of the council's committees and project development groups. You might want to have your diary handy because all activities and events happening over the next few months in the local area are listed on the final couple of pages.

We are looking forward to meeting you at the Annual Town Meeting at 7pm on Friday 20th April at Leigh Community Centre. This is an opportunity for you to raise issues and concerns about life in Leigh and hear about the work that the Town Council does on your behalf.

There is an opportunity for you to influence decisions before that meeting though. We are looking for ideas from you on how to spend the Community Infrastructure Levy (CIL). Have a look at the article in this magazine and let us know what you think. You can do this by completing a slip and returning it to us at the Community Centre or use the QR Code to link to an online survey.

One of the key priorities for the Town Council is to improve and strengthen our links with the local community. We hope that this newsletter makes an important contribution to firming up these links and we value your feedback and comments to help us make them even stronger.

We welcome articles from local organisations and residents. If there's something you'd like to tell us about and you think it would be of interest to readers, we'd love to hear from you.

I hope you find our newsletter useful and interesting.

Vivien Rosier, Editor

LTC Staff Details

Town Clerk

Helen Symmons

helen.symmons@leighonseatowncouncil.gov.uk

Assistant Responsible Finance Officer

Emma Stratton

emma.stratton@leighonseatowncouncil.gov.uk

Assistant Proper Officer

Abbie Cotterell

abbie.cotterell@leighonseatowncouncil.gov.uk

Facilities Manager

Graham Davison

graham.davison@leighonseatowncouncil.gov.uk

Events & Projects Officer

Emily Dean

emily.dean@leighonseatowncouncil.gov.uk

Marketing & Profile Officer

Francesca Smith

francesca.smith@leighonseatowncouncil.gov.uk

Bookings Administrator

Hannah Mumford

hannah.mumford@leighonseatowncouncil.gov.uk

Finance Assistant

Susan Bedwell-Smith

suebsmith@leighonseatowncouncil.gov.uk

Receptionist

Liz Evans / Linda Mitchell

reception@leighonseatowncouncil.gov.uk

Senior Caretaker

Ashley Curtis

ashley.curtis@leighonseatowncouncil.gov.uk

Caretakers

David Skeels, Claire Broad, Mark Doolan

Leigh Town Council - Wards - Polling Districts - Polling Stations



LTC Councillor Details

Bonchurch Ward

Cllr Jill Healey 07854 959 389

Elms Ward

Cllr Fr. Clive Hillman 01702 475967

Cllr Caroline Parker 01702 477703

Cllr Jane Ward 01702 472117

Herschell Ward

Cllr Donald Fraser 01702 476082

Cllr Dec Mulroney 01702 475117

Highlands Ward

Cllr Mark Bromfield 01702 390602

Cllr John Duprey

Cllr Vivien Rosier 01702 474252

EMAIL

councillor@leighonseatowncouncil.gov.uk

Leigh Road Ward

Cllr Anita Forde 01702 715070

Cllr Richard Herbert 01702 715653

St Clements Ward

Cllr Valerie Morgan 01702 475590

Cllr Carole Mulroney 01702 475117

St James Ward

Cllr Jill Adair 01702 716626

Thames Ward

Cllr Patrick Fox

Cllr Ron Owen 07748 907110

SBC Councillor Details – Southend-on-Sea Borough Council YOUR Councillors for Leigh-on-Sea Wards

Belfairs Ward

Councillor Stephen Aylen 01702 212892 cllraylen@southend.gov.uk

Councillor Maureen Butler 01702 212867 cllrbutler@southend.gov.uk

Councillor Lesley Salter 01702 432364 cllrsalter@southend.gov.uk

Blenheim Park Ward

Councillor Helen Boyd 01702 212363 cllrboyd@southend.gov.uk

Councillor James Courtenay 01702 212870 cllrcourtenay@southend.gov.uk

Councillor Floyd Waterworth 01702 212892 cllrwaterworth@southend.gov.uk

Leigh Ward

Councillor Bernard Arscott 01702 212062 cllrarscott@southend.gov.uk

Councillor Carole Mulroney 01702 212890 cllrmulroney@southend.gov.uk

Councillor Peter Wrexham 01702 711958 cllrwrexham@southend.gov.uk

West Leigh Ward

Councillor Fay Evans 01702 558657 cllrevans@southend.gov.uk

Councillor John Lamb 01702 483908 cllrlamb@southend.gov.uk

Councillor Georgina Phillips 01702 534644 cllrphillips@southend.gov.uk



Note from Town Clerk

It never ceases to amaze me, how busy the Council team and myself are when serving the Leigh community. Our working days are always extremely varied as we deal with a whole host of different duties. It does mean between us we have a wealth of knowledge to be able to assist our residents and visitors and there is not much we can't tackle. If we don't know it or can't assist, we generally can point you in the right direction or have a suitable contact.

All the time we are looking at ways of improving our services to you whether it is creating a new Community Centre event, reviewing our internal processes or ensuring we are obtaining the best value for money for a contract or piece of equipment.

The team has grown to 15 members of staff now (the majority are part time), which is no wonder really when we are providing the community centre facilities 7 days a week, generally from 9 am to 10 pm and dealing with all the administration of a larger Town Council.

So please continue to use us as your first point of call either through our website, on the telephone or in person at the Community Centre and do follow us on Facebook or Twitter so you don't miss out on any of the news or information that we provide. Being the only parished town in the Southend Borough, Leigh-on-Sea is unique and we are here to try and continue making Leigh a special place for our residents.

Helen Symmons **Town Clerk**



Nearly New Fair

**Pre-loved baby
and children's clothes,
toys, equipment and
nursery items**

**LEIGH COMMUNITY
CENTRE**

11AM - 2PM

**SATURDAY 24TH MARCH
SATURDAY 29TH SEPTEMBER**

**ENQUIRIES@
LEIGHCOMMUNITYCENTRE.COM**

COUNCIL REPORT



Note from Chairman

Jane Ward Chairman of Leigh-on-Sea Town Council

In February and March last year we organised a number of Neighbourhood Planning workshops, consequently Councillors raised a number of issues of concern. The major one was the need for LTC to develop a strategic plan with realistic and achievable objectives over a four year period. It was this that motivated me to put myself forward as Chairman of LTC in order to lead on this.

The majority of Councillors and staff members recently met on a Saturday to agree our Mission and Values and to identify specific objectives on ways we should be developing closer links with our electors and community in representing the 'People, Heritage and Identity' of Leigh-on-Sea.

Currently we are working on a structure to ensure we review and organise delivery of the strategic plan. I'm really happy that we were able to work well as a team and in collaboration with our staff. A copy of the working document will be available for comment at the Electors meeting on 20th April.

We have strong links with Southend Borough Council, particularly in relation to planning and education. In the previous issue of this publication we carried letters about the School Boundary Consultation and lobbied on behalf of parents in stating how our primary schools catchment areas were established on original Ecclesiastical boundaries fundamental to the uniqueness of Leigh.

We also have very passionate and eloquent campaigners whose arguments have won the day it seems. The proposed SBC recommended changes have been dropped I'm delighted to say. So congratulations all those who wrote in expressing your views and attended the consultation events. It was good to play a part in your campaign even though I was informed that LTC, surprisingly, is not a Statutory Consultee and was therefore only able to play an informal role.

Planning issues in Leigh bring out similar passionate voices and so we have asked SBC if we can be part of the process in developing their Local Plan which, I hope, will reflect the concerns specific to Leigh. The concentration of flats in the centre of Leigh is one such concern as are the increasing number of licensed premises.

We also share in wholeheartedly supporting Leigh's independent shops. Parking is another huge issue for residents and visitors.

I hope to meet as many of you as possible at our electors event, it will be good to hear from you in person when we will be able to better respond to your needs.

All Council meetings are open to the public. Council meetings are always held on a Tuesday at 7.30pm, the majority take place in the Council Chambers (Room 6) at Leigh Community Centre.

The Council has various standing committees and sub-committees which all report back to full Council meetings. Committee meetings are held bi-monthly and sub-committees only meet when called.

All Councillors are expected to attend every full Council meeting, to discuss, agree or disagree on recommendations from the other Council committees.

Dates

Tue 15th May 2018

Tue 5th June 2018

Tue 17th July 2018

Tue 18th September 2018

Tue 20th November 2018

Council Chairman – Jane Ward

Council Vice-Chairman – Valerie Morgan



Litter-less Leigh

Join the 'Litter-less Leigh' group in the fight to rid Leigh-on-Sea of its ever increasing litter. Every month a group of committed community members voluntarily clear large areas of litter, from plastic bottles to furniture, to make Leigh sparkle. If you live in Leigh and want to give a little back please find out more on our Facebook page 'Litter-less Leigh'

Community Litter Pick A Great Success

Leigh-on-Sea Town Councillors in conjunction with Make Southend Sparkle took part in a litter pick on Belton Hills on Saturday 13th January. There were 37 volunteers including a lovely three year old boy who had great fun helping out!

Many volunteers expressed their distress at the amount of rubbish they picked up and over 20 bags were collected in just a two hour period.

There are discussions in progress to set up a dedicated group that will meet monthly in Leigh to carry on this fantastic effort.

New Councillor For Leigh

Leigh-on-Sea Town Council would like to extend a warm welcome to their newest Councillor, John Duprey. Cllr Duprey will be overseeing the Highlands Ward alongside Cllr Vivien Rosier and Cllr Mark Bromfield.



As there was no call for an election from residents of the ward, a co-option process was held with 4 interested parties at a Council meeting on Tuesday 19th December. John Duprey was the successful candidate.

Cllr Duprey was previously Headteacher of Belfairs School for many years. Now retired he is the Chair of Governors for Southend Adult Community College.

With his years of governance experience the Town Council is certain that Cllr Duprey will be a real asset to the residents of Leigh.

Town Council Wins Quality Council Award Status

Leigh-on-Sea Town Council has recently been awarded Quality Council status from the National Association of Local Councils.

The Quality Award demonstrates that a council achieves good practice in governance, community engagement and council improvement, going above and beyond their legal obligations, leading their communities and continuously seeking opportunities to improve and develop even further.

The Town Council previously held a foundation level award and has already started their application for the Quality Gold Award.

Policy & Resources Committee

This is the council's senior committee. It oversees the finances, staff and governance of the council.

Leigh-on-Sea Town Council has once again succeeded to keep the rise in the precept to a level below inflation by careful management of resources, forward planning and listening to residents. With the necessary repairs and improvements at the Community Centre and other planned works, there will be major expenditure over the coming years but with careful financial planning the council intends to hold the precept at a steady rate. Councillors are unpaid and receive no allowance.

What did we set out to do in the past twelve months and how have we done?

- We continue to develop this newsletter and two issues a year are delivered to every household in Leigh - we will also be adding additional news pages in the Leigh Times twice a year so that you are kept up-to-date with events and council activities more regularly
- Our website has been a particularly successful enterprise and we have seen a substantial increase in the number of 'hits' and you can contact us directly via the website if there is anything you wish to tell us
- We work alongside other groups and encourage any community group that feels we could assist with their endeavours to get in touch – we run a grant award scheme of £5000 per year to help worthwhile community projects/groups
- Just recently we have agreed to sponsor special constables in Leigh to help the police - this will cost £5000 per year
- The council is committed to working with volunteers – this brings many advantages for us and also to the volunteers. At the present time, volunteers are involved in caring for the planters on Strand Wharf, the Farmers' Market, administrative roles and supporting at council events
- The P&R committee ensures that the actions taken by the other committees are on track and being monitored effectively
- Councillors and staff have attended a series of internal workshops designed to inform the direction of our next strategic plan. This is now near to completion and will give the council a better sense of direction.
- The P&R committee is responsible for general staffing. We provide employment for 15 people in the running of our busy office and the Community Centre. Our staff handle hundreds of enquiries as well as keeping track of all our finances and accounts. As you can imagine, organising events, supporting council activities and maintaining the various assets of the council are all big tasks!
- A proportion of our total budget is spent on a huge variety of activities including elections, school crossing patrols and capital projects (such as Strand Wharf)

Cllr Richard Herbert
Chairman Policy and Resources Committee

WHAT DOES LEIGH-ON-SEA TOWN COUNCIL DO FOR YOU?

- ✓ Town Events - Including Leigh Lights
- ✓ Supporting residents on a wide range of issues
- ✓ Leigh Community Centre
- ✓ Leigh Farmers' Market
- ✓ Community Transport Scheme
- ✓ Protecting the Environment and Town Heritage
- ✓ School Holiday Activities
- ✓ Grant Award Scheme
- ✓ Allotments
- ✓ Old Town First Aid Post
- ✓ Regular Magazines
- ✓ Funding School Crossing Guards
- ✓ Planning Committee
- ✓ Strand Wharf
- ✓ Hanging Baskets
- ✓ Artist in Residence
- ✓ Volunteer Programme
- ✓ Skate Park



A VOICE FOR LEIGH

Policy & Resources Committee

The Policy & Resources Committee handles the governance and financial control of the Council. It is also responsible for staffing, grant awards, the volunteer programme and the Leigh Town Council newsletter.

The remit of this Committee includes:

- Approval of the Corporate Plan
- Council's budget setting
- Ensuring effective use of resources and value for money

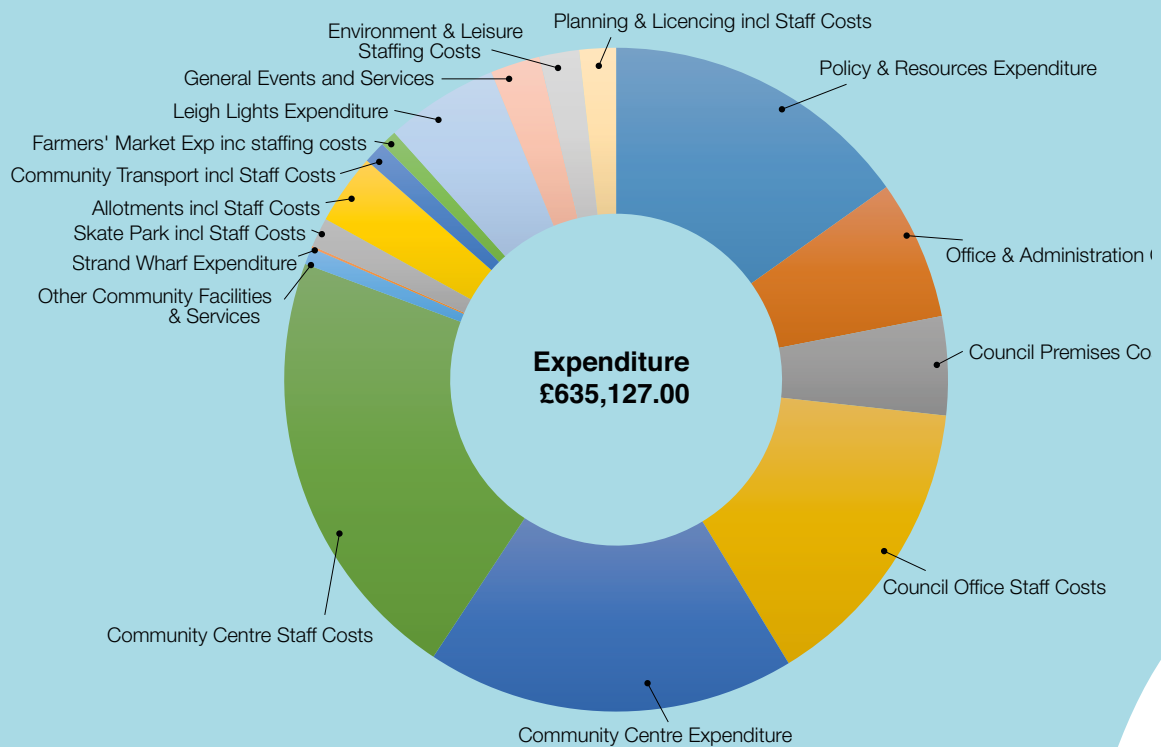
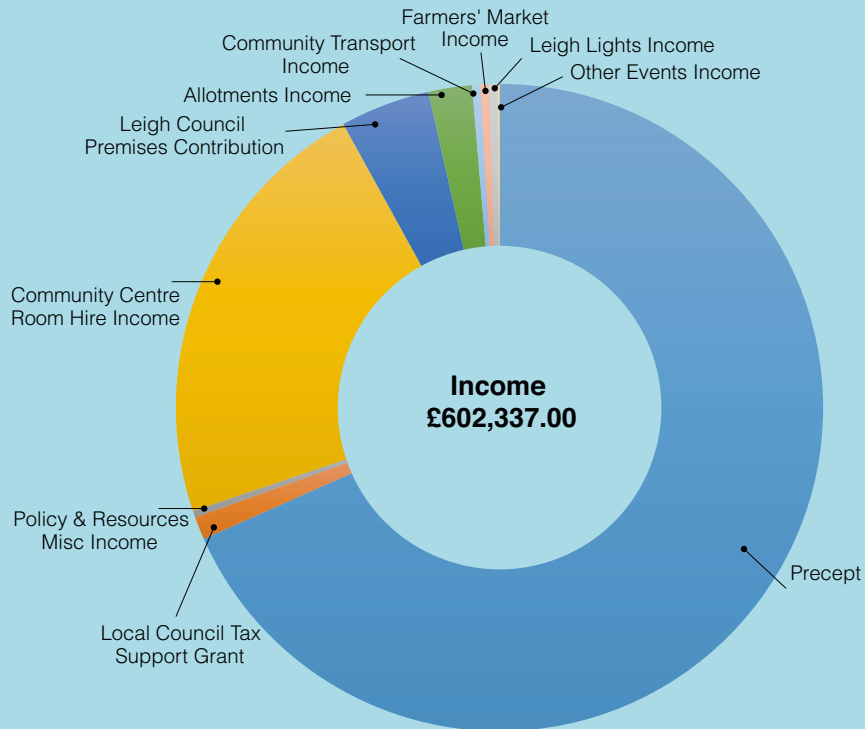
Dates

Tue 1st May 2018
Tue 3rd July 2018
Tue 4th September 2018
Tue 6th November 2018

Membership

Cllr Richard Herbert - Chairman
Cllr Declan Mulroney - Vice-Chairman
Cllr Mark Bromfield
Cllr Donald Fraser
Cllr Jill Healey
Cllr Valerie Morgan
Cllr Carole Mulroney
Cllr Ron Owen
Cllr Jane Ward

Leigh-on-Sea Town Council 2018/19 Budget



Community Facilities Committee

The Community Facilities Committee is responsible for all council premises and assets including the operation of Leigh Community Centre. The Community Centre sub-committee meets when required to further discuss the Community Centre refurbishment. There is also a Leisure Development sub-committee that meets as required to discuss the developments of other council assets, such as the skate park.

Dates

Tue 3rd April 2018
Tue 5th June 2018
Tue 7th August 2018
Tue 2nd October 2018
Tue 4th December 2018

Membership

Cllr Carole Mulroney - Chairman
Cllr Ron Owen - Vice-Chairman
Cllr Donald Fraser
Cllr Jill Healey
Cllr Richard Herbert
Cllr Valerie Morgan
Cllr Declan Mulroney
Cllr Vivien Rosier
Cllr Jane Ward

CFC Report Chairman's Report

The Community Facilities Committee has had a very busy few months and to a certain extent this report is 'business as usual'.

School holidays and the Christmas lead up in the Community Centre were extremely busy periods and the committee has received detailed reports with regard to the excellent work our staff have put in in arranging many events for children as well as Christmas fairs and markets.

We have recently welcomed the Art Trail as our new 'Artist in Residence' so expect to see many differing displays on the walls as well as the legacy piece donated by Mary Lister our previous Artist in Residence.

Our café, Lorna and Lottie's continues to do well and more events are being held in the café area and more are planned.

Recent months has also seen more in depth discussion about works which need to be carried out at the Centre and proposals for enhancement which we are considering for the future. All designed to improve what we offer to the residents of Leigh.

Outside the Community Centre the committee and its Leisure Development sub-committee has continued to look into ways of improving the Skate Park for our young people and this has involved some maintenance work and looking at future enhancements.

Strand Wharf refurbishment really came into its own in the summer months and the flag pole has been repaired and the Town Council flag now flies high above the Wharf. We are already looking forward to it being used in the coming year for a variety of events.

Cllr. Carole Mulroney Chairman

A poster for Leigh-on-Sea Town Council's Grant Award Scheme. It features a dark blue speech bubble on a light blue background. Inside the bubble, the text reads: 'Leigh-on-Sea Town Council's GRANT AWARD SCHEME' in large, bold, white letters. Below this, it says 'Apply for a grant of up to £500 to support local community initiatives, charitable and not-for-profit organisations...' in smaller white text. At the bottom, it provides contact information: 'For more information, visit www.leighonseatowncouncil.gov.uk'.

Grant Award Scheme Information

Applications are now being taken for Leigh-on-Sea Town Council's Grant Award Scheme. The Council offer grants of up to £500 for charitable, not-for-profit organisations and community initiatives throughout the town.

The grant can also be awarded in the form of a bursary to cover the cost of room hire at Leigh Community Centre. This is ideal for organisations who need an accessible space to run events, workshops or meetings that will benefit the local community.

Multiple bursaries can be awarded at each intake, with the next deadline for applications being the 31st March 2018. Leigh-on-Sea Town Council have previously supported Leigh Art Trail, Blade Education, and Leigh Regatta as well as many other groups.

For more information or to request an application form, please contact council@leighonseatowncouncil.gov.uk or visit Leigh Community Centre



New Hirers

Leigh Community Centre is getting increasingly busy but we still manage to attract a lot of enquiries and do our best to fit new bookings in.

We are excited to welcome new hirers the Feel Good Choir, Keira Sussex's Yoga Group and the Salvation Army Church who, from March will be holding their Sunday congregations at the Centre whilst their church is being refurbished. Best for Training have also booked in a number of training courses throughout the year on a variety of subjects including first aid, counselling and accounting.

For full details of all our classes visit www.leighcommunitycentre.com/classes or come to the Centre reception.

October Half-Term 23rd-27th Oct 2017

Leigh Community Centre has a well-established programme of fun and varied school holiday activities which run throughout the year, we have made a promise to parents that all events will be affordable and even free where possible.

This October Leigh Community Centre provided a magical week of Harry Potter themed activities for their half-term events. The Art Ministry joined in on Tuesday with "Wizarding Arts & Crafts" where children could make their own wand and owl. Over £280 was raised for the charity that provides arts and crafts groups for adults and children with learning difficulties.

Seventy children were then treated to an exciting Marko Sparko magic show on Wednesday with fun games and balloon modelling. On Thursday the South East Essex Organic Gardeners provided an Autumn Gardening Workshop in seed harvesting and bird feeder making, with all profits donated back to the organisation.

Feb Half-Term – 12th – 16th Feb 2018

Dinosaur Half-Term Fun A Roaring Success



Droves of children were thoroughly entertained throughout the February half term week with dinosaur themed activities at the Centre. All events were completely sold out with over 250 children attending the 5 different sessions.

The Art Ministry joined us on Tuesday for Arts and Crafts, raising £228.00 for their charity. Wednesday was incredibly busy with the "Prehistoric Playground", where children could meet moving dinosaurs, dig for fossils, handle minibeasts and meet giant tortoise Hercules as well as other dinosaur themed activities. To close the week Imagination Station provided their Dinosaur Puppet Show to a huge crowd on Thursday.

SEEOG also provided a fun and educational gardening workshop on the Monday planting potatoes and creating mini pizza gardens.

We are incredibly grateful for the continued support of parents for our half-term activities and are overwhelmed with how popular they have become. If you would like to be the first to know of upcoming activities at the centre, then join our mailing list by emailing enquiries@leighcommunitycentre.com

Lorna & Lottie's Café

Lorna & Lottie's is a family run café situated on the ground floor of the Centre and caters for the needs of all the Centre users.

The café serves an array of yummy hot drinks, tasty breakfast and lunch time meals, as well as a variety of delicious homemade cakes and treats. Children's lunch bags are also available. Card payments are now accepted for transactions over £5.

Lorna & Lottie's also provides affordable and tailor-made catering options for weddings, parties and events at the Centre.



TERM TIME OPEN HOURS

Monday	9am-3.30pm
Tuesday	9am-3pm
Wednesday	9am-6pm
Thursday	9am-9pm
Friday	9am-3pm
Saturday	10am-2pm

Upcoming Events from our Hirers

Look out for regular tribute band nights "Leigh Rocks" that are happening monthly at the Centre. Groups performing music from The Who, The Jam and U2 are among those appearing.

Leigh Community Centre is also pleased to announce a series of comedy and cabaret nights that will be happening regularly at the Centre from March.

Our main hall and bar make the perfect venue for any event, be it party, craft fair, quiz night, or performance. Call us on 01702 716288 to discuss your next event.



2017 ended with a bang with a fantastic Christmas Farmers' Market. It was thoroughly well attended with shoppers looking for treats for their Christmas Feasts! All of our stall holders donated goods for a wonderful Christmas Hamper which was the star prize of our Christmas Raffle.

Over the last few months the Market has grown immeasurably with new stalls being added to the offering every month. We have also added in the occasional craft stall to create a more well-rounded shopping experience. And in 2018 we will be launching "Vegan Corner" with eight dedicated stalls selling home-made vegan produce, including cakes, meat substitutes and protein balls.

The market is always held in Leigh Community Centre on the third Friday of the month from 9am to 1pm. We are always on the lookout for new local traders to attend the market and can offer very competitive rates for stalls. We have a focus on bringing fresh, local and quality produce to the residents of Leigh, and invite everyone to come along!

For further information call

01702 716288

or visit us online at:

www.leighcommunitycentre.com/leigh-farmers-market
www.leighonseatowncouncil.gov.uk/leigh-farmers-market
www.facebook.com/LeighFarmersMarket

Farmers' Market Dates 2018

FRIDAY'S:

16th February • 16th March • 20th April
 18th May • 15th June • 20th July
 17th August • 21st September • 19th October



The first Farmers' Markets in February and March saw the addition of five new stalls;

My Choc O'Leight an artisan company that will be bringing their finest hand tempered and masterfully hand-sculpted chocolates, using select ingredients that support "Healthier Choices."

Ahyoka Natural Cleaning Products create handmade, natural, toxin-free and vegan friendly cleaning items fragranced with pure essential oils. Their range of laundry products, sprays and washing up liquids are ideal for those with allergies or chemical sensitivities.

The Food Beaver produce their own unique spice blends and seasonings, containing all natural ingredients that are perfect for creating delicious meals with meat, fish or vegetables with no compromise on quality or flavour.

Inner Sparkle is a magical way to make their own sparkling cake-toppers to enhance celebrations and parties. Their creative sparkling animals also make the perfect gift for any occasion, candle holders and can be used as name place holders.

Pig & Mimi is an all vegan animal treat company creating homemade, healthy and wholesome snacks helping you to provide the very best for your 4-legged friends.

Mallow Magic make handmade marshmallows in a variety of flavours including a range suitable for vegans and vegetarians. We like to keep things simple by only using a small number of ingredients and real flavours in our products where possible.



Leigh Allotments Orchard Group



The orchard supported many Gatekeeper butterflies in mid summer



Tun Apple, a large dessert apple, raised somewhere in Essex before 1850



Chelmsford Wonder, a large cooking apple from 1870

It is the quiet season on the orchard at present with the trees in their period of dormancy. The scythes and sickles were out in November when we ran a work party to carry out the main grass cut of the year and current activity is restricted to cutting back the native hedges surrounding the site. The orchard tends to flood in periods of heavy winter rain but so far all is well, although we are looking for some more frosts which fruit trees need to set themselves up for the new fruiting season.

We try to do the best we can for wildlife on the orchard: recent years have not been too good for butterflies but we still manage to support a small number of relatively scarce marbled whites and last year's most numerous butterfly was the gatekeeper. Foxes are, not surprisingly, regular visitors and there are usually a number of frogs based in the small pond, and slow worms although the latter suffered a big hit from badgers on one occasion last year. Flocks of sparrows and starlings gather in nearby trees and shrubs and there is usually a resident robin hanging around. Grasshoppers abound in the long grasses in mid-summer.

It will be a while before much wildlife reappears, but March should see the pear trees come into flower and they will be followed in April and May by the apples. Before that some of the trees will need pruning plus the removal of any dead and crossing branches and that will be followed by an annual application of fertilizer.

Anybody interested in helping to look after the orchard can contact me through Leigh Town Council.

David Hammond

Manchester Drive Allotment Society

At this time of year the site is asleep, very little is growing, but it is a time to get on the plot and prepare for the spring, getting rid of those pernicious weeds. As soon as spring breaks the muddy plots are transformed into living green plots, later bursting out into colour as the season progresses.

Flowers of all kinds, vegetable of many varieties are grown. Everyone has a different way of growing, some plot holders spend hours a week on their plots, others just a few. It's a place to lose yourself, to chat to your neighbour or try something new. Whatever takes your fancy...

MDAS is a very active society that runs regular committee meetings, a weekly meet and greet and a yearly Open Day, and their on-site shop and café is open on weekend mornings. The site has just over 200 plots in a range of sizes from as little as £9.00 a year, if you are interested in having your own allotment at this site call the Town Council on 01702 716288 for more information.





Environment and Leisure Committee

The Environment & Leisure Committee controls the running of town events, allotments, the community transport scheme and the Leigh Farmers' Market as well as handling any environmental issues.

This edition of Leigh Town Council News will arrive on your doorsteps earlier in the year than previous editions, meaning we can give you good notice of the exciting season ahead.

One of the main functions of the Environment and Leisure Committee is providing events for you the residents. We have now had another successful Night of the Lights, enjoyed by many and raising £2089.42 for a variety of charities. Also once again our Carols on Strand Wharf; where this year we were joined by Father Christmas and his elves, courtesy of Leigh Lions. As usual many thanks to the Salvation Army and Carol Bastin for leading the singing and for the generous donations of mince pies.

Looking forward there will, as in previous years, be events for children in Leigh Community Centre over the Easter Holidays. We plan to hold a Community Event in Bonchurch Park on Sunday 10th June for which planning is underway. Then on Sundays in July a second season of events on Strand Wharf. Do keep an eye on the council website for further details of all these events.

In October we hope to celebrate the arrival of the Brent Geese from Siberia by collaborating with the RSPB with a further event on Strand Wharf. Again keep an eye on the website.

On the environmental front I continue to liaise with Make Southend Sparkle for litter picks and Veolia through their community meetings. Any ideas on reducing the amount of dog poo in the town would be gratefully received.

Finally, as usual, a massive thank you to the office staff for all their help and hard work.

Valerie Morgan Chairman Environment and Leisure Committee

Community Transport

Leigh-on-Sea Town Council's Community Transport Scheme allows our elderly residents in Leigh to go on days out and get-togethers with transport right from their front door.



The members of our Transport Scheme celebrated Christmas with a seasonal lunch at the Sarah Moore. There was a "local knowledge" quiz which instigated much reminiscing of Leigh and Southend. There were fabulous prizes kindly donated; copies of books by local authors Robert Hallman and Rachel

Lichenstein and gift vouchers from Mattacks Fishmongers and TruLeigh Scrumptious Tearoom.

We and the staff at the Sarah Moore took the opportunity to sing Happy Birthday to Peggy Hazell who turned, a very youthful, 100 years old.

Many thanks to all those who responded to our adverts for Volunteer Drivers. We now currently have sufficient drivers who are being trained to drive the minibuses. However if you are under 70 years old and your driving licence has D1 entitlement and you have a few hours to spare each month please contact our office on 01702 716 288 or by email council@leighonseatowncouncil.gov.uk. We would still love to be able to contact you in the future if needed.

If you would be interested in becoming a member of our Community Transport Scheme please get in touch with the Council on 01702 716 288 or by visiting the Leigh Community Centre reception.



Dates

Tue 17th April 2018
Tue 19th June 2018
Tue 21st August 2018
Tue 16th October 2018
Tue 18th December 2018

Membership

Cllr Valerie Morgan - Chairman
Cllr Vivien Rosier - Vice-Chairman
Cllr Jill Adair
Cllr Anita Forde
Cllr Patrick Fox
Cllr Fr. Clive Hillman
Cllr Carole Mulroney
Cllr Caroline Parker
Cllr Jane Ward

Leigh Lights

The annual Leigh Lights event was held on Friday 24th November, the Town was packed with people eager to watch our Yuletide Parade.

This year, the parade featured 22 entrants of almost 400 individuals from groups including Essex Marching Corps, Starlight Productions, Players Theatre Company, Eastwood Lions and Southend RNLI. An outstanding £2089.42 was collected for 14 different charities.

Stibbards & Sons kindly sponsored this year's parade and the two best parade entries won £150 and £100 respectively to donate to their charity of choice. Winning first place was the Southend Scout and Gang Show (right), and second place went to the Morgan Academy of Performing Arts. The winners were presented with their cheques on the 19th December.

The winners were selected by audiences who voted using a new interactive system, which the Council hopes to use again at future events.

Thanks to CS Parking, the Festive Fairground returned to the car park behind the Grand and a mixture of charity and concession stands was set up in Elm Road. Crowds were entertained by a selection of wonderful local choirs and musical groups such as Funky Voices, Salvation Army and Leigh Orpheus Male Voice Choir, throughout the town at Liquid Flair and Oasis Café and in Elm Road.

The children's pre-parade fun at the Community Centre was also a great success with craft activities, facepainting, storytelling and princess appearances on offer. As well as a photo opportunity with Santa, thanks to the Leigh Round Table.

Leigh-on-Sea Town Council would like to thank the traders and businesses that kindly made donations towards Leigh Lights 2017.

We have been running the event for a number of years now and whilst we strive to keep improving the evening by offering our residents a fun and varied programme of activities throughout the town and encouraging visitors to see what our local shops have to offer on the night, costs do continue to rise and we rely on the support of our traders.

A total of £2,250 was raised from traders (see list below) - the highest for many years, and we are extremely grateful for the contributions which are put towards the main costs of running the event – road closures and security at approximately £6,000.

This year's event will be Friday 30th November 2018.

A special thanks to the following traders/businesses for their donations: Belle Fabrics, Betty Holland, Body's Opticians, Broadway Opticians, Burkmar Jewellery, CJ Vinten Goldsmiths, Clink, Crème Cakes & Shakes, David Roberts, Strictly Smartz Dancing, Giles Wilson Solicitors, Greens Health Foods, Hatton Jewellery, Henry Burgers, Home of Leigh, Hong Kong Takeaway, Irmas, Jasmine Day Spa, Leigh Gallery Books, Leigh Road Baptist Church, Natural Edge, Natwest Bank, Peppermint, Pride and Glory Tattoo Studio, Stibbard & Sons, Strangeways, Store Thirty 3, The Curvy Gurl, Vet4Pets, Vino Vero Ltd and Warburtons



••••• Christmas Fayre •••••

The Community Centre's first Christmas Fayre was a great success with a packed out Centre offering over 80 stalls of festive gifts and crafts. The event is now set to be an annual occasion due to its popularity.



Carols on Strand Wharf

The snow held out as over 400 people braved the cold to join in Leigh-on-Sea Town Council's Carols on Strand Wharf event on Saturday. This year was especially festive as Santa and his elves kicked off proceedings, thanks to the Leigh Lions Club, followed by Carol Bastin singing our favourite carols to the accompaniment of the Salvation Army Band.

The event started slightly earlier than previous years to make it more inclusive to families, a change which was well received as many children joined in the festivities.

Adding to the twinkly lights on the wharf, were the festive lanterns made earlier at the Fishermen's Chapel and glow sticks handed out by Leigh-on-Sea Town Council.

Homemade Bakery, Sainsburys, Waitrose, Morrisons, Tescos and the Co-op had all kindly donated plenty of mince pies so there were enough for everyone to enjoy with a warm cup of mulled wine after they had sung all the carols.

Families and friends wrapped up warm to join in this memorable community event and generously supported the charity collection where £268.70 was raised for Alzheimers Research UK, the chosen charity of Town Council Chairman Cllr Jane Ward.



CIL – What is it and why does it matter?

CIL stands for Community Infrastructure Levy and put quite simply it is a government imposed payment made by developers based on their development and is mandatory, subject to some exceptions.

The money goes into a Borough Council pot to pay for, or towards, infrastructure projects in the area. The Council produces a list of such projects.

Leigh is fortunate as the only Town Council in the Borough it receives 15% of all the CIL paid for developments in its area. But before we get carried away and think this is megabucks, in reality it may only amount to a few thousand pounds a year.

The fact that CIL is payable never should be a reason for granting planning permission, it is a consequence of, not a reason for, and planning applications are still subject to all the usual examinations and rules.

The money has to be used within 5 years of receipt so we have to have a rolling programme of projects and ideas on which it should either have been spent or is committed.

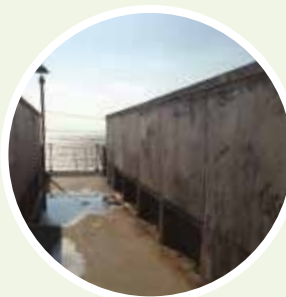
The Borough Council's list of projects to which it will allocate the CIL money is Borough wide which may include projects in Leigh but the far smaller pot allocated to the Town Council is solely for the Town.

Obviously the Town Council has ideas about what this money could be spent on or saved for but it would like to hear from residents what they think and for them to put forward ideas.

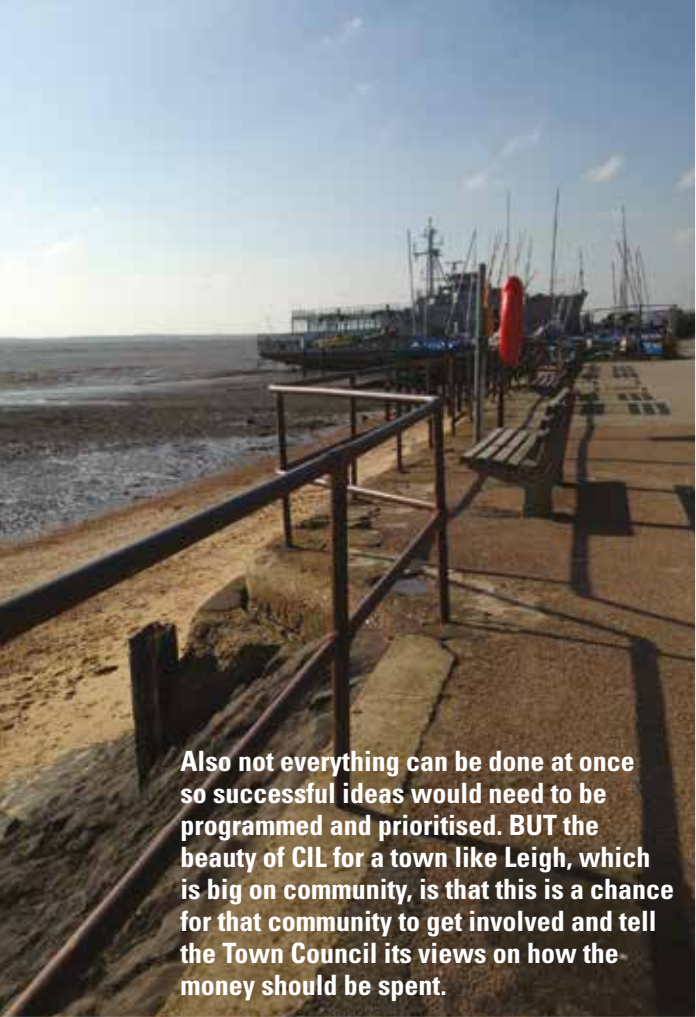
Such a question could open up a can of worms in terms of different ideas so there is a CIL regulation which monies must be spent in accordance with.

"supporting the development of the local council's area, or any part of that area, by funding –

- a) The provision, improvement, replacement, operation or maintenance of infrastructure; or
- b) Anything else that is concerned with addressing the demands that development places on an area."



Scan the QR Code to link to an online survey and register your response



Also not everything can be done at once so successful ideas would need to be programmed and prioritised. BUT the beauty of CIL for a town like Leigh, which is big on community, is that this is a chance for that community to get involved and tell the Town Council its views on how the money should be spent.

To whet your appetite here are just a few suggestions which have come forward from Town Council members;

- **Improvements in Leigh Library Gardens**
- **Photographic displays throughout Leigh**
- **Identifying, cleaning, improving signage and accessibility of footpaths in the town**
- **Replacement of notice boards on Marine Parade**

You may not agree – and that’s fine – but let’s give it a go and see if we can get some improvements and enhancements for the town. It would help, when completing the form if you gave a little bit of background to say why you think your project is a good idea.

Thank you for taking part.
Cllr Carole Mulroney



The Town Council has come up with some suggestions, but we invite further ideas and comments from ALL residents.

Please complete the slip below and return it to Leigh Community Centre, 71-73 Elm Road, SS9 1SP
Alternatively use the QR code to link to an online survey and register your response

NAME:

EMAIL:

PHONE:

ADDRESS:

SUGGESTION(s):

REASON(s):

Planning, Licensing & Highways Committee



The Planning, Licensing and Highways committee considers all planning and licensing applications and highway issues. Their recommendations are then passed onto Southend Borough Council and can help weigh the outcome of the application. Due to the large number of applications this committee meets fortnightly.

If a planning application is submitted by a neighbouring property you will be notified by Southend Borough Council. You are then welcome to come and view the plans at Leigh Community Centre and make comments about the application.

Dates

Tue 27th March 2018
 Tue 10th April 2018
 Tue 24th April 2018
 Tue 8th May 2018
 Tue 22nd May 2018
 Tue 12th June 2018
 Tue 26th June 2018
 Tue 10th July 2018
 Tue 24th July 2018
 Tue 14th August 2018
 Tue 28th August 2018
 Tue 11th September 2018
 Tue 25th September 2018
 Tue 9th October 2018
 Tue 23rd October 2018
 Tue 13th November 2018
 Tue 27th November 2018
 Tue 11th December 2018

Membership

Cllr Jill Healey - Chairman
 Cllr Patrick Fox - Vice Chairman
 Cllr John Duprey
 Cllr Anita Forde
 Cllr Donald Fraser
 Cllr Richard Herbert
 Cllr Valerie Morgan
 Cllr Caroline Parker
 Cllr Jane Ward

As a statutory consultee we are able to make comments and register objections about planning, highways and licensing applications within the Leigh-on-Sea Town Council area. These comments/objections are taken into consideration, for the purposes of decision making, by planning officers at Southend Borough Council.

In the past 12 months the committee have considered and commented on 340 planning applications. The process works like this:

Prior to the meeting each committee member will have an opportunity to preview the applications on the agenda. If they consider it needs further discussion it is flagged up for consideration at the meeting. This is known as "calling in".

When discussing applications we take into account any residents comments and objections, local knowledge, impact on the surrounding area and any other material fact that may be relevant. Opinions quite often vary within the committee and this frequently leads to very lively and constructive debates!

To further aid productive discussion the Town Clerk provides a written report for each meeting that highlights relevant points for discussion and directs the committee to the Southend Borough Councils Development Management Document. (This document sets out the Borough Council's policies for positively managing development and is used to assess planning applications.)

Members of the public who have views about applications are encouraged to speak at the Leigh-on-Sea Town Council committee meetings, as are developers and architects. Committee members welcome the opportunity to receive information and comments from all relevant parties.

It is important to note that if a resident wishes to object, or support an application representation must also be made direct to Southend Borough Council.

Once representations have been made to Southend Borough Council planning officers will consider the application and make a recommendation to the Development Control Committee. As with Leigh-on-Sea Town Council, a Southend Borough councillor can "call in" an application for discussion at the monthly Development Control meetings.

Members and officers of Leigh-on-Sea Town Council regularly attend the Development Control meeting to listen to the opinions and comments of the Borough councillors and planning officers. It is both interesting and informative to hear their remarks and observations.

If you would like to know more about the planning process please come along to one of our planning meetings. You will find the agendas and minutes from the meetings on our website: **leighonseatowncouncil.gov.uk**

The information on Southend Borough Council website is comprehensive and informative: **southend.gov.uk**

As members of the Planning, Highways and Licensing Committee we are here to represent the residents of Leigh. We aim to support you and act on your behalf at every opportunity. Leigh is an amazing place to live and work and collectively we need to ensure it continues to be unique and full of character.

Cllr Jill Healey **Chairman**

Our Lovely Little Hill

Church Hill is about 170 years old and is still one of the most loved and photographed parts of Leigh (see front cover of LTC News No 6). The Hill is in fact a public footpath and as such it is the right of the inhabitants of the town to pass along it on foot only.



So how did its existence come about – well we have a former Rector of St Clement's to thank for that, although he wasn't thanked at the time.

The Rector was the Rev Robert Eden. He had built the National Schools on the Hill at his own expense and also the new rectory (now the Library), and laid out its grounds, but in so doing deprived the locals of a well-loved route from the Old Town, strewn with cockle shells to keep it clean and with seats for the traveller to rest. It was also the usual route to the Church for wedding parties and funerals. To stop this use Rev Eden positioned posts across the path so that funerals of adults from the Old Town had to go up Horse Hill (Leigh Hill).

Funeral corteges of children were carried up this hill but for adult funerals the hill was too steep to take the greater weight.

Henry William 'Antiquary' King, a local worthy who wrote about the properties in Leigh in Victorian times wrote: 'to gratify the intense selfishness of the wealthy Rector appointed in 1837 the public lane usually called Chess Lane was closed and laid into the Rectory grounds thus excluding the whole of the inhabitants from their immemorial highway and promenade overseeing the town and extending almost its entire length and commanding the Thames and the further shore of Kent for many miles. All engrossed to the gratification of the man and his neighbour.

The Church Hill forming the western boundary of Normans Field and the only ascent and descent from and to the town which took advantage of the best levels was abolished and laid into the property on the west of it and the steep and dangerous footpath through Normans Field was merely [?] and fenced off in substitution, four paths from the town were permanently closed and corpses were required to be borne thenceforth by the longer steeper and more circuitous main road.'

So that's how Church Hill came to be and by the time they were getting ready for the railway to come through Leigh in the 1850s, the Map related to the London, Tilbury and Southend Extension Act of 1852 clearly shows its present position.

Volunteer With Us

An estimated 15.2 million people volunteer at least once a month in the UK*.

For some volunteers it's the chance to give something back to the community or make a difference to the people around. For others, it provides an opportunity to develop new skills or build on existing experience and knowledge.

Not only does volunteering help the wider community, offering vital help to people in need, but it also benefits you, the volunteer. Helping others can reduce stress, combat depression, keep you mentally stimulated, and provide a sense of purpose.

Leigh-on-Sea Town Council's Volunteer Programme was established in 2015 and since, volunteers have assisted the Council at a number of community events including Leigh Lights, summer events in the Old Town and our children's activities at Leigh Community Centre. The volunteers also assist the Council by updating the town noticeboards, litter picking, typing, flyering and delivering letters and helping on Community Transport trips.

The Council is incredibly grateful for the help of our volunteers and aim to continue to grow the volunteer programme over the coming years to ensure an ongoing team of supporters who can really build community spirit within the town.

If you are interested in becoming a Volunteer for the Council please contact us directly for more information.

*Reference: Cabinet Office (2013) 'Community Life Survey'

Telephone: 01702 716288

Email: council@leighonseatowncouncil.gov.uk

Or alternatively visit the council offices within Leigh Community Centre.

Volunteer Profile

Meet one of our volunteers, Hilary Le Marie, and find out what she does to promote community spirit in Leigh-on-Sea.



How did you get involved with the LTC Volunteer Programme?

I had been good friends with (Cllr) Valerie Morgan since school and also knew (Cllr) Carole Mulroney and they asked me for advice with setting up the volunteer program initially, which evolved into helping out at Council events.

What jobs have you done when volunteering with the Council?

I go out once a week and update the Towns noticeboards with the Council agendas and minutes, and also any adverts for Council and local events.

I have also taken part in litter picks and helped at the Leigh Lights, Carols on Strand Wharf and the 90 for 90 Birthday Tea Celebration.

Why do you like being a Council Volunteer?

I enjoy helping the community and working to keep it a nice place, especially by litter picking. I also like to know what's going on in the town and staying updated.

What other activities do you do?

I am actively involved with the Leigh-on-Sea British Legion and run their Poppy Appeal; I also take part in Speedwatch and Active Citizenship.

Why would you recommend volunteering?

It's a great way to meet new like-minded people and there is a real sense of satisfaction in helping the community.

BECOME A VOLUNTEER

EVERY PERSON MAKES A DIFFERENCE

JOIN US AND HELP OUT AT UPCOMING
EVENTS AND COMMUNITY PROJECTS

CONTACT EMILY DEAN
Emily.Dean@leighonseatowncouncil.gov.uk

WWW.LEIGHONSEATOWNCOUNCIL.GOV.UK

West Leigh Infants & Juniors School

Over 200 children from West Leigh Junior School presented an outstanding celebration of Christmas at their annual Carol Service at St Margaret's Church. Pupils from every class told the Christmas story in words and song to a huge congregation of staff, family and friends.

West Leigh 'painted the school spotty' for Children In Need, when everyone came to school dressed in spots. The school council also created word puzzles, which went on sale at lunchtime causing lots of excitement! It was brilliant to see so many children working hard to solve their puzzles during their lunchtime and by the end of the day West Leigh had raised an amazing £671.42 for Children In Need!

This term, three pupils joined Mr Lear and Mrs London at the Tickfield Centre in Southend. Here they attended a ceremony to receive the school's award for Equality and Diversity Champions. The three Year Six pupils spoke to the assembled group of head-teachers and representatives from the Town about the work we had completed towards our award, including attending workshops about disability and improving the provision of our playground squad.



St Michael's School Opens New Classrooms

Pupils and staff at St Michael's Church of England Preparatory School, Leigh-on-Sea, have moved into a suite of new classrooms that are revolutionising learning. The new, Google classrooms are the most recent innovation in the school's IT development plan which aims to transform pupils' learning through adopting forward-thinking approaches to the use of IT within the curriculum. Through the virtual classrooms, pupils have immediate access to learning resources, are engaging in individual and collaborative learning tasks, responding to questions set by their teachers and contributing their comments to on-line class discussions.

The introduction of the Google Classroom to lessons has been enthusiastically welcomed by pupils, staff and parents. Head, Mr Steve Tompkins said, "Within hours of being introduced to Google Classroom, pupils were discovering the benefits of this new way of learning. Within the first few weeks, pupils have already been actively engaging in new and innovative learning activities that are sparking their imaginations and are promoting in pupils the essential qualities of independence, confidence and responsibility."

This latest innovation is just part of the school's wider aims to promote in pupils a thirst for knowledge and a love of learning. It comes as the school is promoting habits of curiosity, cooperation, resilience, resourcefulness and reflectiveness for high performance learning and personal development in order to prepare them for each new step in their education and to equip them for life and work in the digital age.

Leigh North Street Primary School

We have been blown away by the generosity our school community has shown at recent events. The following fundraising took place with donations being given to Great Ormond Street Hospital and Little Havens; KS1 Choir at the train station raised £590.00, donations from our Nativity performances raised £1777.70, Christmas Jumper Day raised £623.79 and all of our activities for Children in Need raised £1718.00.

Our Parents Association had a very busy Autumn Term organizing the Christmas Fayre and purchasing new outdoor tables and planters for the playground. The PA has raised £3800 this term, we are very lucky to have such an active Parents Association.



**ARE YOU A YOUNG ENTREPRENEUR,
AGED BETWEEN 16-25?**

**LEIGH-ON-SEA TOWN COUNCIL INVITE
YOU TO JOIN OUR FIRST**

YOUTH MARKET

AND TRADE IN YOUR LOCAL TOWN

**THE POP-UP MARKET WILL SHOWCASE
SOUTHEND'S VERY BEST YOUNG
ENTREPRENEURIAL TALENTS**

**Are you aged 16-25?
Do you want to start
your own business?
If you have something
to sell or promote
get involved with
Leigh-on-Sea Town
Council's first Youth
Market on Saturday
14th July.**

The Council are organising the event as a way to showcase young local entrepreneurs and introduce them to new potential customers. Local market trading is a low-risk way of distributing goods and services to the shopping public – a perfect environment for novice traders looking to gain experience.

We are also offering the opportunity for young designers or artists to create the promotional materials. There will also be the chance to get involved in all aspects of planning the event, and will be invaluable experience for young people to add to their CV's or University Applications.

To complement the Youth Market the Community Centre will also host a variety of taster sessions aimed at young people in our other rooms - including dance and fitness workshops. If you run a class you think would be suitable, we would love to hear from you.

By introducing the youth of today to market trading, they may just become the market traders of tomorrow.

**To register your interest email
council@leighonseatowncouncil.gov.uk
or call 01702 716 288.**

As part of the South Essex Active Travel (SEAT) project we are able to offer subsidized adult cycle training. So, have you ever thought about using your bike for a way of getting to work, getting fit and saving money at the same time? Well, we can help you!



ADULT Cycle TRAINING



**SUBSIDISED ADULT CYCLE TRAINING
FROM SOUTH ESSEX ACTIVE TRAVEL
(SEAT) PROGRAMME**

Don't have a bike?
**DON'T WORRY, CYCLE AND HELMET
HIRE WILL BE PROVIDED.**

**SIMPLY BOOK, PAY, AND COME
READY TO LEARN!**

We have friendly qualified instructors that can offer 1:1 training, training in a group, which could be with a group of friends, a group of work colleagues - we can be flexible to meet your needs. Each session normally lasts for 2 hours, and we will even give you a goodie bag at the end of the session to help you on your future journeys.

We can work with adults wanting to learn to ride a bike from scratch, from building on your confidence and control skills, up to tackling busy roundabouts, dual carriageways and traffic lights. In addition you will learn how your bike works and how to check for faults.

To further support you, we can even work out your route and give you a buddy to cycle into work with on that first day.

No bike, no problem as we can lend you all the equipment needed!

No Lycra required, we teach people to cycle in their everyday clothes, we just want you to be comfortable.

Contact us if you would like to discuss any matters, we are always happy to help. Should you wish to set up your own group or training, just give us a call and we will tailor it to your needs. This service is available to adults in the Southend, Rochford, Castlepoint, Basildon and Thurrock areas.

There is a £10 commitment fee for 1:1 bookings, but bookings for groups are free

For further details or to book a training session please email;

ideasinmotionsouthend@southend.gov.uk
or phone **01702 215 595** or **01702 215 338**



Leigh Art Trail & Leigh Town Council @ Leigh Community Centre!

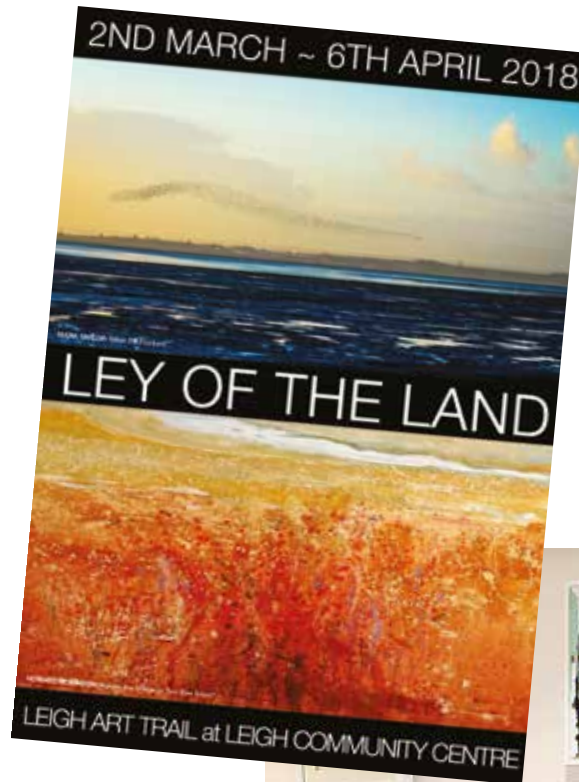
Leigh Town Council has been running its 'Artist in Residence' project at the Community Centre for the past several years. Selected and appointed by Leigh-on-Sea Town Councillors, the aim of the scheme is to offer a local artist an opportunity to help inspire, generate and share, creative ideas with the Leigh-on-Sea community. Appointed on a yearly basis, the selected artist has access to a studio space in the attic, as well as the use of the display walls around this much-loved Leigh landmark.

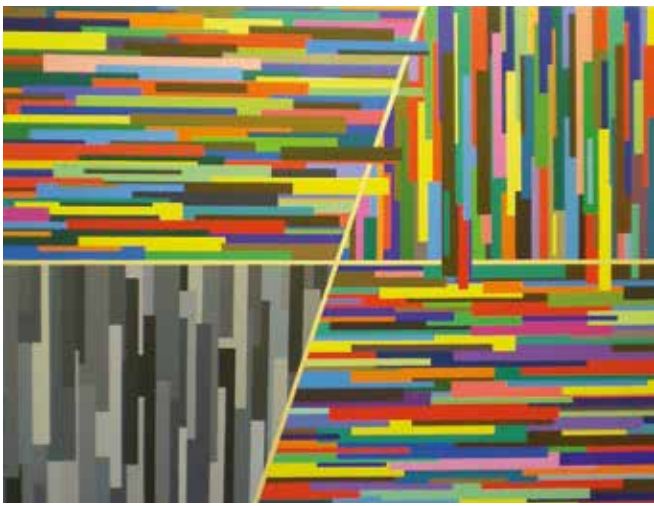
2018 sees the Leigh Art Trail take on the year-long artistic residency, which has already got off to a great start with the last exhibition Art of the Abstract attracting lots of attention and positive comments. (see attached photo of the last preview night) Artists new to the trail, as well as those more established names, exhibit their work side by side, making for a real eclectic mix of genres and mediums.

The current exhibition Ley of the Land, Ley taken from the old Saxon term for Leigh, showcases the many talents of the LAT artists paying homage to our much-loved local land and seascape. Indeed, the front cover 'Meet the Flockers' by local photographer Mark Taylor, is one of the many beautiful artworks in the show, which also features artists such as Kerry Doyland, Andrew Hall & Victoria Sills. Future shows include, Figuratively Speaking, Painting with Light and Drawing to an End. For full details of the Residency as well as this year's Art Trail, please visit the website, www.leigharttrail.com.

To coincide with each exhibition, a series of free workshops for young and old, will be held over the course of the year, with many opportunities for those who have always wanted to create their own masterpiece, but never got around to it. Run by Leigh Art Trail artists, attendees will get a chance to gain insight into how the artists' work as well as a chance to study their techniques.

This residency project is all possible due to the late Art Trail artist Yvonne Pedretti, who exhibited her intricate wall and sculptural pieces formed through machine stitch, knit, crochet and weave in the Trail for a number of years. She very generously bequeathed the art trail some money, which is being used towards this residency to help raise the profile of the Trail, whilst at the same time encouraging more people to view, take part and create art in our local community, which she was a passionate advocate of.





SATURDAY 9TH - 16TH JUNE

It is full steam ahead now as we hurtle towards the 2018 Leigh Art Trail. While our artists are busy creating beautiful and thought-provoking pieces, a team of enthusiastic volunteers are working busily behind the scenes to ensure this year's Trail has something for everyone.

For the first time we are delighted to welcome on board train operator c2c, who are kindly providing event space at Leigh Station and Chalkwell Station. Scott Irving (Brave Arts) and the artist group Seven will be displaying work at Leigh, while The Other MA (TOMA) are creating work for Chalkwell. Both promise to be a feast for the eyes of commuters and thousands of visitors to the Trail.

On top of that we have 13 new venues, extending the Trail this year from Chalkwell Esplanade all the way to Belfairs Woods. We are, as ever, hugely grateful to all the shops, cafes and businesses for hosting artists and supporting our rich and varied homegrown talent.

Leigh continues to generate so many exciting artists and the Trail received an overwhelming response to its call for fresh talent this year.

As a result we are proud to introduce 19 new names, meaning there will be 72 artists in 67 venues along the Trail, exhibiting our widest range of genres to date including painting, spray art, felt-making, sculpture, photography, textiles, jewellery, metalwork, stained glass, altered books and ceramics.

And back by popular demand is the Silent Auction, which is your chance to bid for lots donated by the artist in each venue. Pick your favourite, fill in a slip, post it in the sealed Silent Auction Box and, if yours is the highest bid at the end of the week, take home a beautiful piece of work!

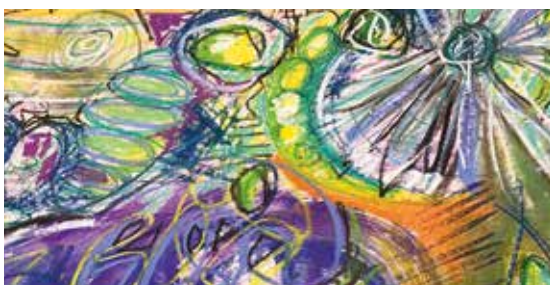
For budding young artists, the Trail is organising exhibitions with many local schools, and there will be competitions for little ones - 'World Oceans Day' at Belfairs Woodland Centre for pre-school children and Leigh Schools 'Me on Sea' for key stage 1 & 2 kids. The winning artwork will be displayed on the Trail!

As you can imagine, it is a huge job to organise such a diverse and exciting event. Since its launch in 1997, organising the Leigh Art Trail has been a collective effort and that philosophy lives on.

This year the team is being led by sculptor Wendy Scotland, working closely with Art Trail favourite Emma Bell of "70 the Broadway". Helping to bring everything together are Paul Alcock organising street decorations, Joe Scotland spreading the word through social media, Seven setting up the Silent Auction and Nicola Trevena coordinating our school competitions.

The enthusiasm and dedication of the team and artists are infectious. We are determined to put on an inspirational, not-to-be-missed event. Make sure you have the dates in your diary: June 9-16.

To keep up with events and artist news, follow us on Facebook and Instagram, or check out our website www.leigharttrail.com





Leigh Sailing Club

The Leigh-on-Sea Sailing Club is an active friendly club that promotes amateur sailing and racing in both dinghy and cruiser classes. The club actively support Leigh Town events, running the dinghy racing events at the Leigh Regatta and providing the sailing spectacle at the maritime Festival with a parade of sail. Dinghy racing is well supported with handicap and Solo class racing. The Solo dinghy is popular with a club fleet where restrictions on boat age are in place to keep costs low. This ensures competitive racing on a minimal budget. Cruiser sailing is also active with organised cruises in company and local port to port racing held in conjunction with other clubs on the shore.

Our clubhouse is situated in the heart of Old Leigh, adjacent to the beach; from the club bar and sun deck you can experience panoramic views of the Estuary. We offer extensive facilities at the water's edge, with storage and slipways for dinghies and drying moorings for cruisers. Car parking and winter cruiser storage are also available on the club grounds. New members are always welcome and encouraged to get involved in our full programme of sailing. We have an active cadets section for children ages 9-17 and club boats available to members with sailing experience. If you have an active interest in sailing and would like more information on our competitive membership rates, please visit www.leighsailingclub.org or send us an email leighsailingclub@gmail.com or come down and meet us at the clubhouse. Regular openings on Friday evenings, Sunday lunchtimes and on race days.

OPEN RACE EVENTS:

Sat June 16th Enterprise and GP14 Open Meetings

Sat July 14th Solo Class Vintage National Championships

Sun July 15th Solo Class Open Meeting

Wed December 26th Brass Monkey Trophy Race

LEIGH SOCIETY

The Leigh Society was founded in 1972 and initially focused on restoring the Old Smithy in the Old Town to form the Heritage Centre, which has been open to the public ever since as a museum of Leigh. The Society has grown from strength to strength and manages the Heritage Centre and the restored Plumbs Cottage.

The aims of the Society are:

- To promote high standards of planning and architecture in the Leigh conservation areas and to secure the preservation of features of historic and public interest;
- To provide and maintain a museum in the Old Leigh Conservation Area for the advancement of the education of the public and for the exhibition to the public of objects, documents, photographs and any other item whatsoever connected with the history of the town of Leigh-on-Sea;
- To secure the preservation, protection, development and
- Improvement of features of public architectural and historical interest in the conservation areas of Leigh; and
- To promote high standards of planning and architecture in or affecting those areas.



The Estuary Club

The Estuary Club was established in 1932 as a Friendly Society. It is a Members' Club situated at the corner of London Road and Canvey Road in the heart of the Marine and Highland estate.

The Club has an excellent well stocked and air conditioned bar together with a separate snooker room with four well maintained snooker tables for use by members and their friends and visiting teams in connection with the local snooker league.

There is another separate function room used for Club functions including a monthly carvery Sunday lunch, quiz nights, parties and for local community activities including a yoga group, Leigh-on-Sea Lions Club, German language club, Bridge Club, and meetings including a residents' group, 'Weightwatcher' and 'Slimming World'.

The function room will seat 60 people and has a capacity of 100. It contains a separate bar and is available for hire and for charity functions. There is a large car park in Canvey Road shared during the day with Francis James & Partners LLP. This is a local community facility and seeks new members.

Leigh Society

Leigh Heritage Centre

High Street, Old Leigh

Plumbs Cottage

They are there for you to enjoy

2018 Talk Programme

Our talks are open to members (£2) and non members (£3) and commence at 7.30pm. The March talk will be held at Wesley Methodist Church in Elm Road. All other talks will be at Leigh Community Centre

21 March - Pilgrimage to Santiago de Compostela — Bishop Stephen Cottrell

11 April AGM — Elm Road—A Moment in Time—Carole Mulroney

16 May— Lost Eastwood—Kiti Theobald

13 June—Palace Theatre and Cliffs Pavillion —Sophie Lander

12 September— Battlefield Essex—John Debenham and Andrew Summers

10 October—History of Canals—Bob Delgano

14 November— Essex Fire Brigade Museum

Membership of the Society is £12 pa which includes our magazine 'Leighway' which is issued 4 times pa. You can download an application form at www.leighsociety.com



Lions Club ... Looking to volunteer?

The Lions Club of Leigh-on-Sea has been serving the community for 27 years, and has raised almost £390,000. The bulk has been donated to individuals with particular needs and other voluntary organizations in Leigh (equipment or direct donation), with contributions going to campaigns and appeals supported by Lions Clubs International, our parent organisation.

Our charity shop at 1492 Leigh Road is the flagship of our fundraising activities and has brought in nearly £220,000. It's run primarily by the Lions, but with significant help from non-club volunteers. Everyone working in the shop is unpaid, and this maximises the amount we can give.

We also work to enhance town life by supporting and organizing activities including litter-picks, fairs, and larger events such as Leigh Regatta. Regatta takes 9 months' planning and without working with our fellow volunteers from 3rd Chalkwell Bay and 4th/6th Leigh-on-Sea scout groups, Leigh Road Baptist Church, Leigh Folk Festival, Leigh Town Council and interested Leigh residents, the event would be difficult, if not impossible, to put on.

We are now looking to re-direct some of our efforts and organisation so we can do even more:

- Thames Estuary branch: relaunched to focus on the issues of loneliness and homelessness, Thames will meet monthly at a lunchtime. The Thames Estuary team will welcome input and attendance from interested groups and individuals.
- Facebook "Friends of LoS Lions Club": aims to connect people and groups who already volunteer in Leigh, or who would like to do so. We will be seeking to strengthen our links with the local voluntary services, such as SAVS

Volunteering can be demanding, but it's a great way to use and develop skills, make new friends – and make a difference.

If you would like to help or join us, please get in touch.

CONTACT

Email: membership@leighlions.co.uk

Website: www.leighlions.co.uk

Facebook: www.facebook.com/leighonsealions

Friends of: www.facebook.com/groups/2035259383414865

HERE ARE SOME OF OUR FORTHCOMING EVENTS

Diary updates will be on our website and Facebook

Fri 11th May 5-4-3-2-1 Charity Quiz Leigh Community Centre

Fri 15th June Human Race Night Estuary Club, London Road

Sat 28th July Disabled People's Sports & Fun Day

Sun 5th Aug Charity Duck Race Old Town

Sun 9th Sept Leigh Regatta Old Town

Broadway Belles WI... Everything but the Jam!

Broadway Belles WI is a friendly evening WI group that holds its meetings at Leigh Community Centre. **We meet on the first Wednesday of each month 7.30pm – 9.30pm and in true WI tradition we always have cake!**

Our members range from 25 to 70, and come from all walks of life. The common thread throughout is to have fun make new friends and learn new skills. Although we only formed in April 2016 we have enjoyed a variety of activities from Latin dancing, flower arranging, circus skills, wine tasting and much more.

Our members have also formed sub groups which include a walking group, book club, secret London group, cinema club and a craft club.

Although we are a newly formed group we have raised over £1000.00 through fundraising for local charities. The WI message is all about inspiring women and therefore we are looking forward to coming up with new ideas as we enter our third year.

We are currently full but you can join our waiting list in case a space becomes available. Please contact our Secretary Lynda on broadwaybellesleigh@gmail.com.

If you would like to try us out we welcome guests to our meetings (up to three times during the year) at a charge of £4.00.



MARCH

2nd March 6th April

Leigh Art Trail Exhibition – “Ley of the Land” LCC Art Wall.

Ley is an old Saxon term for Leigh and the surrounding areas, Hadleigh, Rayleigh, Hockley and Thundersley. The exhibition will be landscapes and seascapes from these areas

16th March 9am-1pm

Leigh Farmers' Market LCC

Free entry, come and get deliciously fresh, local and handmade produce

24th March 11am-2pm

Nearly New Fair LCC

Free entry. A family event, buy or sell quality babies and children's goods. Stalls £10

30th March

LCC & Council Offices CLOSED for Bank Holiday

APRIL

2nd April

LCC & Council Offices CLOSED for Bank Holiday

Easter Half-Term Events

4th April 11am-3pm

Easter Fun Day LCC

Free entry, bouncy castle, egg hunt, face painting, fete style games, crafts, singing and much more!

5th April 1.30pm-2.30pm

Beauty and the Beast Dance Workshop LCC

£4 per child, limited spaces, run by Kay from First Steps Dance

6th April 11.30am, 1pm, 2.30pm

Punch & Judy and Storytelling Event LCC

Free entry. 3 sessions available, Professor Joe's Punch and Judy and Tiny Tales Storytelling

10th April 1.30pm-3.30pm

Art Ministry Arts & Crafts LCC

£4 per child, all profits donated to The Art Ministry

11th April 1pm-3.30pm

Circus Workshop & Magic Show LCC

£5 per child, learn circus skills and be dazzled by a magic show. Suitable for ages 4 - 11

12th April 2pm-3pm

Balloon Modelling Workshop LCC

£4 per child, Bex Balloons will be teaching how to make different balloon models for you to keep

11th April

Leigh Society Talk and AGM LCC

Entry from £2 “Elm Road – A Moment in Time”

13th April-25th May

Leigh Art Trail Exhibition – “Figuratively Speaking”

LCC Art Wall

An expressive exhibition of portraits and figures in any form

20th April 9am-1pm

Leigh Farmers' Market LCC

Free entry, come and get deliciously fresh, local and handmade produce

20th April 6pm-8pm

Annual Community Meeting LCC

Come along and find out about the Council's Year and have your say about YOUR town!

21st April Doors open 7.30pm

Leigh Rocks Tribute Night – Ian Drury & the Blockheads LCC

Tickets £10/£12. The Blox perform

28th April

Leigh Pop-Up Craft Fair LCC



MAY

7th May

LCC & Council Offices CLOSED for Bank Holiday

9th-12th May

Leigh Operatic & Dramatic Society “Copacabana”

Palace Theatre

A dazzling rendition of the Barry Manilow musical directed by Sallie Warrington. Tickets available from southendtheatres.org.uk

11th May 8pm

Leigh Lions 5-4-3-2-1 Charity Quiz LCC

For more info www.leighlions.co.uk

16th May

Leigh Society Talk LCC

Entry from £2. “Lost Eastwood”

18th May 9am-1pm

Leigh Farmers' Market LCC

Free entry, come and get deliciously fresh, local and handmade produce.

19th May Doors open 7.30pm

Leigh Rocks Tribute Night – Status Quo LCC

Tickets £10/£12. Quo'd perform

May Half Term Activities at LCC yet to be confirmed. Look out for updates on our Facebook page

JUNE

1st-22nd June

SACC Student Show Exhibition LCC Art Wall

9th June Doors open 7.30pm

Leigh Rocks Tribute Night – U2 LCC

Tickets £10/£12. U2 Tribe perform

9th-16th June

Leigh Art Trail Throughout Leigh www.leigharttrail.com for more info

10th June 12pm-4pm

Leigh Community Day

Bonchurch Park

Free entry. Support your community and enjoy exhibitions, activities and performances from local community interest groups and charities

13th June

Leigh Society Talk LCC

Entry from £2. “Palace Theatre and Cliffs Pavilion”

15th June 9am-1pm

Leigh Farmers' Market LCC

Free entry, come and get deliciously fresh, local and handmade produce

15th June 7pm-11pm

Leigh Lions Human Race Night

Leigh Estuary Club For more info www.leighlions.co.uk

21st-24th June

Leigh Folk Festival

Throughout Leigh. For more info www.leighfolkfestival.com

30th June 10.30am-4pm

Armed Forces Day

Southend High Street

Parade and live music plus exhibitions of military equipment. www.southendcarnivalevents.org.uk

29th June-3rd Aug

Leigh Art Trail Exhibition – “Our Rebellious Artists Summer Show” LCC Art Wall

Coinciding with the 250th Summer Exhibition at the Royal Academy, this exhibit asks Leigh Art Trail artists to create a piece in a media they wouldn't normally use



Summer Season on Strand Wharf comprises of a series of small, family friendly events in Old Leigh. For more information on each event, please visit our website or follow 'Leigh Town Council Events' on Facebook



22nd July 9am-10.30am

Yoga Morning Strand Wharf
Free entry. Bring a mat, water and comfy clothes and enjoy Hatha yoga in a beautiful seafront setting! An inclusive and free class, suitable for beginners to intermediates. The class will include gentle warm up and stretches, focus on breathing, sun salutations and yoga postures to open and increase energy to the whole body and mind. Students need to let the instructor know of any major illnesses and injuries they may have on arrival

22nd July Time TBC

Dance Demonstrations

Strand Wharf
Free entry. Put on your dancing shoes and join us for short dance demonstrations to Strand Wharf. Please visit our website for more information soon

29th July 11am - 4pm

Music-a-Leigh Strand Wharf
Free entry. Relax in our deck chairs, soak up the setting on Strand Wharf and enjoy music from local choirs and bands

20th July 9am-1pm

Leigh Farmers' Market LCC
Free entry, come and get deliciously fresh, local and handmade produce

20th July Doors open 7.30pm

Leigh Rocks Tribute Night – The Jam LCC
Tickets £10/£12. The Jam Project perform

AUGUST

Summer School Holiday Activities at LCC throughout August yet to be confirmed. Look out for updates on our Facebook page

Leigh Art Trail Workshops – During Summer Holidays

Family workshop for World Photo Day. Street Photography Walking Workshop. A variety of workshops for children and adults

5th Aug

Leigh Lions Charity Duck Race
Old Town For more info www.leighlions.co.uk

10th Aug-21st Sept

Leigh Art Trail Exhibition – “Painting with Light”

LCC Art Wall
A photography show demonstrating the idea of “light”

10th-12th Aug

Southend Carnival Association Beer Festival

West Leigh Juniors School
www.southendcarnivalevents.org.uk

12th Aug 11am-4pm

The Metro Bank & Southend Carnival Association Dog Show
Priory Park
www.southendcarnivalevents.org.uk

15th Aug

Southend Carnival Association Children's Day Priory Park
www.southendcarnivalevents.org.uk

17th Aug 9am – 1pm

Leigh Farmers' Market LCC
Free entry, come and get deliciously fresh, local and handmade produce

18th Aug

Southend Carnival Association – Carnival Procession
Southend Seafront For more info www.southendcarnivalevents.org.uk

28th Aug

LCC & Council Offices CLOSED for Bank Holiday

SEPTEMBER

9th Sept

Leigh Regatta Old Town
For more info www.leighlions.co.uk

12th Sept

Leigh Society Talk LCC
Entry from £2. “Battlefield Essex”

21st Sept 9am-1pm

Leigh Farmers' Market LCC
Free entry, come and get deliciously fresh, local and handmade produce.

22nd Sept Doors open 7.30pm

Leigh Rocks Tribute Night – The Who LCC
Tickets £10/£12. Who are you? perform

28th Sept-2nd Nov

Leigh Art Trail Exhibition – “Drawing to an End”

LCC Art Wall
Tying in with The Big Draw month and the final show of the Leigh Art Trail residency at LCC will focus on the importance of drawing

29th Sept 11am-2pm

Nearly New Fair LCC
A family event, buy or sell quality babies and children's goods. Stalls £10



JULY

8th July 11am-4pm

Craft & Cuisine Strand Wharf
Drop by Strand Wharf for some retail therapy and browse over 15 stalls of goods handmade by our local crafters, with tasty treats and food also available

14th July

Youth Market LCC
A first for the Council, aimed at providing an outlet for young, local entrepreneurs. The market is open to anyone aged 16 -25 and gives them the chance to get involved in planning and marketing the event, as well as have a stall and attend free workshops

15th July 11am-4pm

Kid's Zone Strand Wharf
Free entry. Kid's zone returns with plenty fun to be had for all ages including, craft, face painting, games and performances



**Come and have YOUR
say about the town**

**We want to boost community
spirit in the town and get people
to come along and find out more
about the Council**



2018 ANNUAL COMMUNITY MEETING

FRIDAY APRIL 20TH
7PM - 8PM

OPEN FROM 6PM FOR REFRESHMENTS & DISPLAYS

COMMUNITY
GROUP DISPLAYS

GOOD FOR LEIGH
AWARDS

MEET YOUR
COUNCILLORS

Q & A SESSION

PRESENTATION
OF COUNCIL YEAR

ANNUAL REPORT

LEIGH COMMUNITY CENTRE, 71-73 ELM ROAD
COUNCIL@LEIGHONSEATOWNCOUNCIL.GOV.UK
01702 716288